

How we work

Our goal:
Stop the violence
& ensure survivor
safety & well-being

Collaboration with
victim support services,
child protection &
probation services



Structured intake process
that excludes ineligible
clients, e.g. with severe
substance abuse issues

Well-trained staff,
regular quality
assurance & programme
evaluations

How we address perpetrators

Hold accountable for
violence, build empathy
& motivate to change

Challenge
manipulations, victim-
blaming, justifications
& minimisation



Work on rigid
gender roles & negative
attitudes towards
women

Continuous &
standardised risk
assessment &
management

How we support survivors

Include in
risk assessment
& management

Provide information
about the programme
& its risks



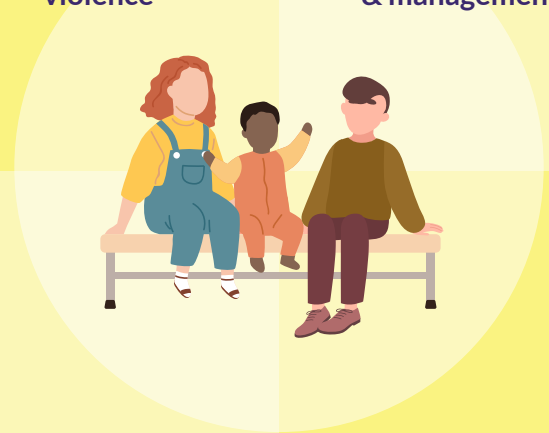
Gather input during
programme evaluation

Prioritise their
perspectives and needs

How we protect children

Interrupt
transgenerational
violence

Child-specific
risk assessment
& management



Sessions with
perpetrators on
responsible fathering

Child
protection
policy

Cooperation with survivor & child support services