



SUMMARY

MOVE Model Guidance for Multi-Agency Collaboration



Funded by
the European Union





MOVE Model – Guidance for Multi-Agency Collaboration

1. Introduction	3
2. Description of the MOVE Multi-agency Collaboration Model	4
2.1. Key principles of the model	4
3. Interaction Flows	5
3.1. Professionals	5
3.2. The MOVE Multi-agency Collaboration Model	5
3.3. Stakeholders & Services	6
3.4. Processes of coordinated response	7
3.5. Condition for Implementation of the Model	8
3.6. The Criminal Justice System & the Community	8
4. Conclusion	9

Guidance for the MOVE Multi-agency Collaboration Model WP4: Fine-tuned MOVE Multi-agency Collaboration Model

Deliverable Lead: Union of Women Associations of Heraklion
Contributors: Centro di Ascolto Uomini Maltrattanti, Associació CONEXS Atenció, Formació i Investigació Psicosocials, Psytel, European Network for the Work with Perpetrators, European Network of Migrant Women, Professor Marianne Hester, and Elli Scambor
August 2023

MOVE: Engagement of Men on the Move and Organizations of Civil Society against GBV within the European Migration context.
A multiagency model for frontline services and perpetrator programs.
101049233 – MOVE - CERV-2021-DAPHNE

Funded by the European Union. Views and opinions expressed are however those of the author(s) only and do not necessarily reflect those of the European Union or the granting authority. Neither the European Union nor granting authority can be held responsible for them.



Funded by
the European Union



EUROPEAN NETWORK
OF MIGRANT WOMEN



1. Introduction

The **MOVE Multi-agency Collaboration Model** provides effective multiagency cooperation mechanism, between services and professionals working with migrants to prevent and reduce domestic violence. The model has survivor's safety at the center, while based on a culturally- and gender-sensitive approach. The principal sources of the **MOVE Multi-agency Collaboration Model** are the data collected by all engaged professionals from 4 EU countries (Spain, Italy, France, Greece) who took part in the MOVE project, combined with guidelines of the model of the Co-ordinated Community Response (CCR) to Violence Against Women and Girls, and Multi-agency Collaboration to Manage Perpetrators of Violence. The key aspect of the **MOVE Multi-agency Collaboration Model** is the focus on constant and continuous communication and exchange of information between relevant services.

The **MOVE Multi-agency Collaboration Model** establishes a structured methodology with an effective referral pathway. This, including alternative solutions, efficient case management in accordance with cultural sensitivity, and possibility for targeted interventions. Some features of the **MOVE Multi-agency Collaboration Model** are applicable to all groups of men with migrant background, while others are more relevant to the "first-generation migrants". The term "migrant" signifies those people who had previously a different nationality (arriving as first-generation migrants), or the second-generation migrants with at least one parent who immigrated to the current country of residence.

2. Description of the MOVE Multi-agency Collaboration Model

2.1. Key principles of the model

The structure of the **MOVE Multi-agency Collaboration Model** is derived from 8 main principles of the Co-ordinated Community Response (CCR) Model adapted specifically to migrant population.

These principles frame the cooperation between front-line agencies/ professionals when dealing with a case of VAWG that has been perpetrated by a migrant man. The principles are:

- 1) **Common understanding** of issues related to violence, gender stereotypes and culture.
- 2) **Guidelines and Policies of Work** for standard cooperation protocols, standard policies/methods and working conditions.
- 3) **Networking:** Information sharing, inter-agency communication, and decision-making procedures by defining the stakeholders involved, the manner and context they interact with and the content of information sharing.
- 4) **Tracking and Monitoring procedures** to structure a methodology for collecting qualitative and quantitative data and to demonstrate the usefulness and effectiveness of such a process.
- 5) **Development of an optimized victim support system** using adequate, appropriate, and valid intervention methods and improving the services provided.
- 6) **Dealing with (migrant) male perpetrators** by becoming aware of the field and its requirements as well as the legal procedures and possible penalties that may be involved.
- 7) **Addressing the harm that violence against women causes to children** using child protection interventions and recognizing the parental issues that may arise.
- 8) **The dual action/objective of the Model** which includes holistic protection of victims and management of migrant perpetrators, while raising aw

3. Interaction Flows

3.1. Professionals

The **MOVE Multi-agency Collaboration Model** involves professionals from various fields, including legal practitioners, prosecutors, police officers, medical staff, mental health specialists, teachers, social workers, administrators, intercultural mediators, interpreters, and humanities specialists. All the involved professionals need to:

- share common knowledge about VAWG and values about combating violence and cultural sensitivity.
- be aware of their own and other organizations' role in managing cases involving perpetrators with migrant background.
- carry out necessary actions, interventions, and use tools so to provide the best possible benefits in terms of the multi-agency collaboration.
- be well trained and be open to further capacity building upon the properties of interventions and processes to be adopted.

3.2. The MOVE Multi-agency Collaboration Model

As part of the MOVE Model engaged professionals follow one of the three phases focusing on addressing violence (Figure 1):

- The professionals of the first phase are trained in identifying victims and perpetrators of violence and administering risk assessment tools.
- The professionals of the second phase provide secondary interventions and meet the needs emerging from the first phase.
- The professionals of the third phase provide specialized services to male perpetrators, such as psychosocial interventions, counselling, and treatment, following a case management plan.

Interventions between all services and professionals involved, need to be in coherence, in close cooperation and open communication channels are considered pivotal. Referrals of incidents of violence are possible to take place between any of the phases, and professionals and services interact with all other stakeholders.

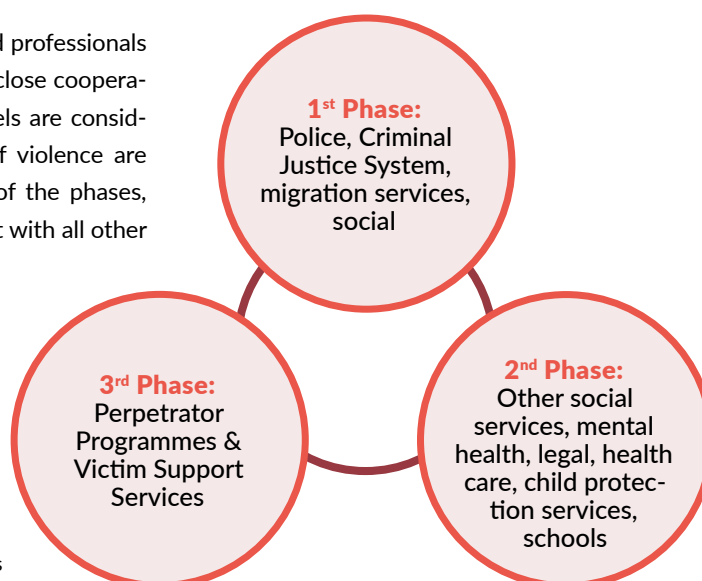


Figure 1: Circular & complementary interaction flows between the stakeholders

3.3. Stakeholders & Services

The stakeholders and services involved from public and private sectors are illustrated in the figure (Figure 2) below:

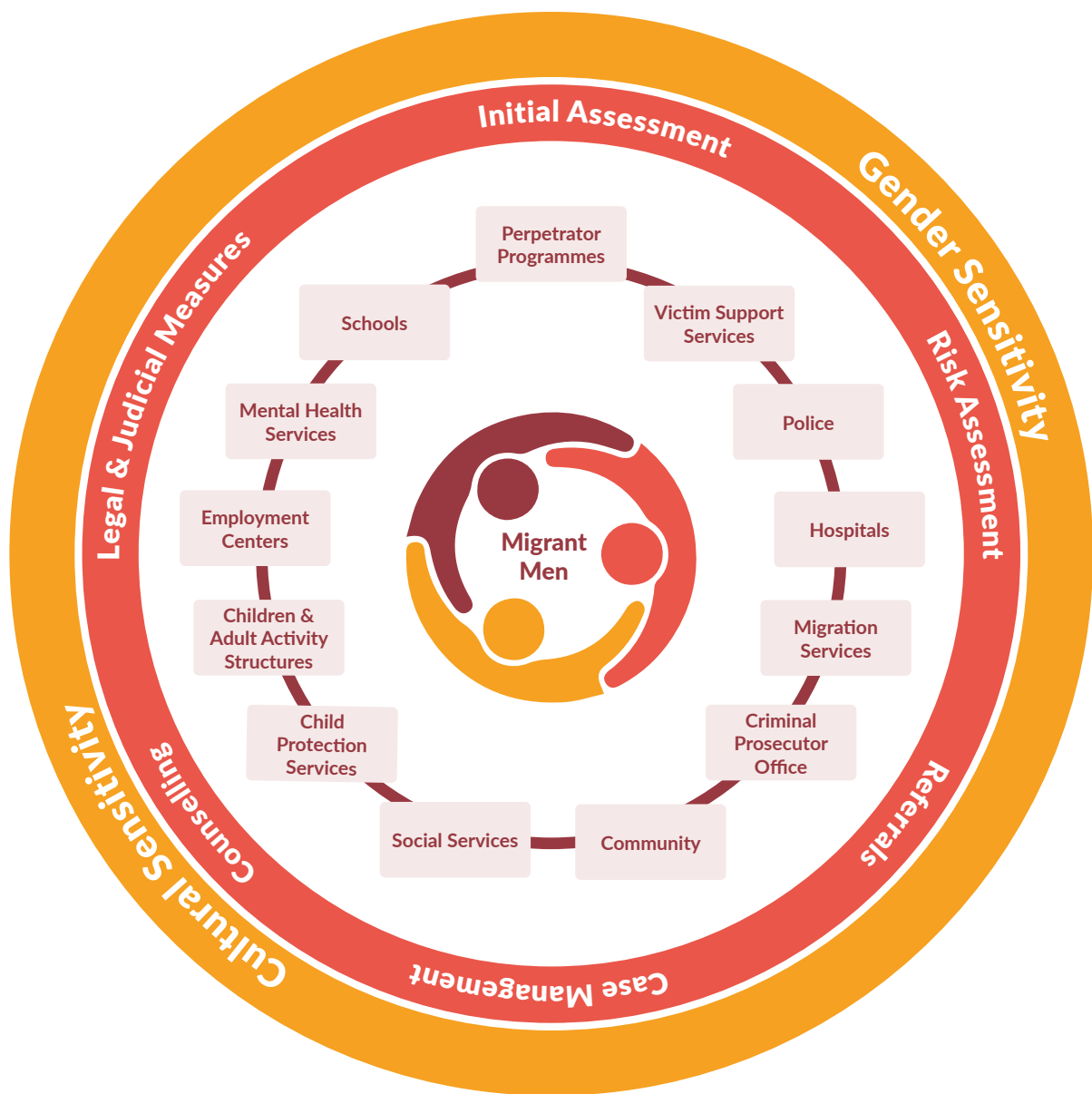


Figure 2: MOVE Multi-agency Collaboration Model

3.4. Processes of coordinated response

The **MOVE Multi-agency Collaboration Model** follows a sequence of steps (Figure 3) to ensure a stable structure for services provision, and professionals' engagement at any each stage of intervention and collaboration. The process incorporates common/similar risk assessment procedures, and common/similar tools.



Figure 3: Processes of coordinated response

3.5. Condition for Implementation of the Model

The implementation and effectiveness of the MOVE Multi-agency Collaboration Model relies upon the following parameters:

- Protection order needs to be applied and taken into consideration so to ensure victim's and survivors' recovery and long-term safety.

- Information sharing takes place under informed consent, safety maximization, and in compliance with the national legislation.

- All engaged professionals need to show mutual understanding of processes and share same values about interventions that take place.

- All engaged professionals should prioritize collaboration so to effectively respond at any case of VAWG by male perpetrators with a migrant background.

3.6. The Criminal Justice System & the Community

The criminal justice system and the community need to be in alliance with each other in endeavoring to attain an effective response to the phenomenon of violence committed by male perpetrators with migrant background. At the same time, communities' awareness needs to be continuous with regards to legal aspects and the rights of both survivors and perpetrators. These lead to the adaptation of a common language, hence efficacious communication and collaboration between engaged community members involving the Criminal Justice System's professionals.

4. Conclusion

Multi-agency approach prevails as an important step to ensure a holistic and effective case management with regards to male perpetrators with migrant background. Communication and regular case management meetings between all the involved professionals need to be in place so to obtain a more versatile knowledge upon the case and achieve efficacy to the process. Multi-agency at perpetrators work for male migrant perpetrators ensures survivors safety, child safety maximization and efficacy at the processes carried out at local – regional level. Hence, coordination of the process is a key issue to be addressed, subject to the local legislation provision and institutional context.

The implementation of the **MOVE Multi-agency Collaboration Model** by the local / regional actors needs to take into account the conditions with regards to information sharing, professionals' skills, and legislation provision. The experience of the “local ecosystem” towards the implementation of the model, will facilitate adjustments, and highlight the need of addressing professionals / agencies stereotypes, work more on the capacity building of engaged professionals upon the efficacy on the “case management” and the need of embedding a multidisciplinary routine at the day-to-day work of professionals engaged. The implementation of the **MOVE Multi-agency Collaboration Model** will highlight the issues to be addressed at local – regional level so to amend and tailor processes, flows and interactions within. The **MOVE Multi-agency Collaboration Model** is not a static model; it is a dynamic set of interactions ensuring efficacy, integrity, and effectiveness towards the engaged beneficiaries.



Funded by
the European Union



EUROPEAN NETWORK
OF MIGRANT WOMEN

